
Designer Series Development System

Conversion Guide



Actel Corporation, Sunnyvale, CA 94086

© 1998 Actel Corporation. All rights reserved.

Printed in the United States of America

Part Number: 5579010-0

Release: January 1998

No part of this document may be copied or reproduced in any form or by any means without prior written consent of Actel.

Actel makes no warranties with respect to this documentation and disclaims any implied warranties of merchantability or fitness for a particular purpose.

Information in this document is subject to change without notice. Actel assumes no responsibility for any errors that may appear in this document.

This document contains confidential proprietary information that is not to be disclosed to any unauthorized person without prior written consent of Actel Corporation.

Trademarks

Actel, the Actel logotype, Action Logic, Activator, and Actionprobe are registered trademarks of Actel Corporation.

Acrobat Reader is a trademark of Adobe Systems, Inc.

Windows is a registered trademark of Microsoft in the U.S. and other countries.

All other products or brand names mentioned are trademarks or registered trademarks of their respective holders.

Table of Contents

Introduction	v
Difference Between Designer Versions	v
ObjectStore Software	v
1 Converting Designs	7
3.1 and 3.0 Designs	7
Pre-3.0 Designs	7
2 Installing ObjectStore	9
Installation	9
3 Setting Environment Variables	13
Windows 95.	13
Windows NT	13
Environment Variables.	13
4 Troubleshooting	15
ADB Could Not be Opened	15
Authentication Failed	15
DLL Not Found	16
Insufficient Memory	16
Miscellaneous ObjectStore Error	17
ObjectStore Will Not Start	18
ObjectStore Panic	19
ODI_SERVER_DIR 'F:\TEMP ' Does Not Exist	19
Ostore Cache Manager does not initialize	19
Program Performed an Illegal Operation	20
Server Not Responding	20
5 Removing ObjectStore	21
Removing ObjectStore	21
A Product Support	23

Table of Contents

Actel U.S. Toll-Free Line 23

Customer Service 23

Customer Applications Center 24

Guru Automated Technical Support 24

Action Facts 24

Web Site 25

FTP Site. 25

Electronic Mail 25

Worldwide Sales Offices 26

[Index](#) 27

Introduction

This manual describes how to convert designs created with Designer versions 3.1 and earlier to the format used by the current version of Designer.

- If you do not need to convert designs created in Designer versions 3.1 or earlier, ***you do not need this manual, and you do not need to install ObjectStore.***
- If you need to convert designs created in Designer versions 3.1 or 3.0, and have not deleted ObjectStore software from your previous installation of Designer, ***you do not need to re-install ObjectStore, and can proceed directly to “Converting Designs” on page 7.***
- If you need to convert designs created in Designer versions 3.1 or 3.0, and do not have ObjectStore software installed, ***you need to re-install ObjectStore as described in “Installing ObjectStore” on page 9.***
- If you need to convert designs created with pre-3.0 versions of Designer, ***you do not need ObjectStore software, and can proceed directly to “Converting Designs” on page 7.***

Difference Between Designer Versions

Designer no longer uses the ObjectStore database software. Designer versions 3.1 and 3.0 used ObjectStore to maintain design integrity and design data. Designer now uses an internal database to maintain design integrity and design data.

Designs created in pre-3.0 versions of Designer did not use ObjectStore software, and do not require ObjectStore for conversion to the current version of Designer.

ObjectStore Software

ObjectStore software is required to convert previous versions of ADB (Actel Database) files created in Designer 3.1 and 3.0. If you have deleted ObjectStore and want to convert designs created with Designer 3.1 or 3.0, you must reinstall ObjectStore before design conversion. See “Installing ObjectStore” on page 9. After your old design files have been converted, you may remove ObjectStore, as described in “Removing ObjectStore” on page 21.

Converting Designs

This chapter describes how to convert designs created in Designer versions 3.1 and earlier to the current version of Designer.

You should convert all designs to the new format. Software updates will be available only for the latest version of Designer.

3.1 and 3.0 Designs

To convert designs from Designer versions 3.1 and 3.0, open the old ADB file with the current version of Designer, and save. Once Designer 3.1 and 3.0 designs have been converted, they are no longer compatible with previous versions of Designer.

Note: Designs created with Designer 3.1 and 3.0 require ObjectStore for conversion to the current version of Designer. If you have deleted ObjectStore and need to install it, see “Installing ObjectStore” on page 9.

Pre-3.0 Designs

To convert pre-3.0 designs, open the ALS file in the current version of Designer, and save. Pre-3.0 designs are converted to the current version of Designer. Pre-3.0 ALS files are not deleted.

Note: Pre-3.0 designs do not require ObjectStore for conversion.

Installing ObjectStore

This chapter guides you through the installation procedure for ObjectStore software on Windows 95 and Windows NT.

Designer 3.1 and 3.0 used the ObjectStore database scheme to keep track of design data. The current version of Designer uses a proprietary database scheme that eliminates the need for ObjectStore.

ObjectStore must be installed to convert 3.1 and 3.0 designs to be compatible with the current version of Designer. Once all designs have been converted, ObjectStore can be removed, as described in “Removing ObjectStore” on page 21.

Installation

Perform the following steps to install ObjectStore:

- 1. Insert the Designer Series CD into your CD-ROM drive.**
- 2. Launch the Ostore install program.** Select the Run command from the Start menu and type the following command:

d:\ostore\install.exe

You can also install Ostor by viewing the contents of the “ostore” directory on the CD-ROM using Windows Explorer, and double-clicking the install.exe icon.

3. Follow the prompts, create a directory named “ostore” in the Installation Options dialog box, as shown in Figure 2-1, and click OK.

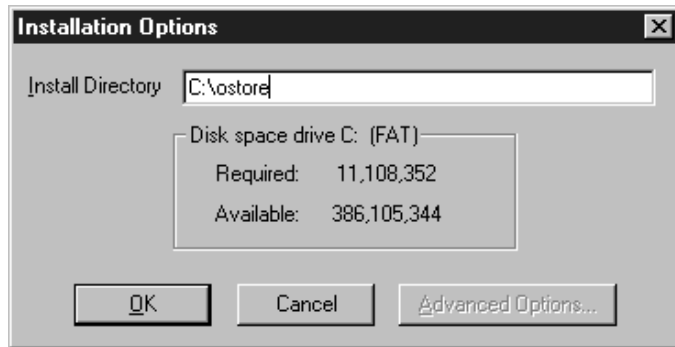


Figure 2-1. Installation Options Dialog Box

4. In the ObjectStore Setup window, check the Auto Start Server check box, then click Initialize Server, as shown in Figure 2-2.



Figure 2-2. ObjectStore Setup Window

5. Create a log file named “ostore/ostrx.log” in the Server Initialization dialog box, as shown in Figure 2-3.

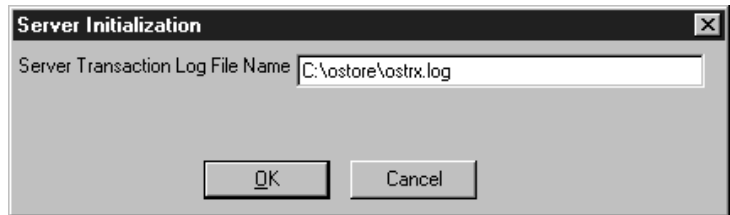


Figure 2-3. Server Initialization Dialog Box

6. Click **Initialize Server** from the **Initializing Server for File Databases** dialog box, as shown in Figure 2-4.

Note: Do not select Create Rawfs Partition from the ObjectStore Setup Window.



Figure 2-4. Initializing Server for File Databases Dialog Box

7. When ObjectStore initialization is complete, exit ObjectStore setup and re-boot your system.

Setting Environment Variables

This chapter describes how to set environment for ObjectStore. Environment variables must be set in Windows 95, and Windows NT, and are listed in “Environment Variables” on page 13.

Windows 95

Environment variables are set in the autoexec.bat file.

Windows NT

Environment variables are set as follows:

1. **Click the Start button, select Settings, and then click Control Panel.**
2. **In the Control Panel icon group, double-click the System icon.**
3. **Click the Environment tab in the System Properties window.**
4. **Set the environment variables, and then click OK.**

Environment Variables

OS_ROOTDIR: This variable specifies a directory where ObjectStore is installed. For example:

```
set OS_ROOTDIR = C:\ACTEL
```

ODI_SERVER_DIR: This variable specifies a directory where ObjectStore can keep temporary files. This directory, which must exist on a local drive, defaults to the Windows temporary directory. For example:

```
set ODI_SERVER_DIR = C:\WINDOWS\TEMP
```

OS_LOCAL_HOST: This variable is the network name of the PC. The installation tool detects the PC name and sets this variable accordingly.

If neither the network nor a network name is detected, the variable is set to `LOCAL_HOST`. If you are not running on a network, make sure this variable is set to `LOCAL_HOST`. For example:

```
set OS_LOCAL_HOST = <LOCAL_HOST>
```

Note: If you are using Windows NT, you must have the networking software installed, or set `OS_AUTH = 12`.

Troubleshooting

This chapter describes potential problems encountered during installation of ObjectStore, and descriptions of how to correct the problems.

ADB Could Not be Opened

The following error message may appear when converting a design from Designer version 3.1 or 3.0 if the conversion utility fails to recognize which version of Designer created the design. (This usually occurs with designs that were created with a beta version of Designer 3.1 or with designs which were converted to Designer 3.1 from Designer 3.0):

```
"<design>.adb" could not be opened, CvdbConvert returned  
error: "<AdbSYS_Cannot_Convert_CvdbConvert_Failed:  
AdbDesign:OpenDesign failed: CvdbConvert Failed, Error  
Code: Cvdb_Rv_Cannot_Determine_Adb_Ver>".
```

To correct this problem, force Designer to recognize the design as version 3.1 select the Run command from the Start menu and type the following command::

```
designer cvdb_force_version:adb_31
```

If Designer returns the same error message, type the following command:

```
designer cvdb_force_version:adb_30
```

Authentication Failed

The following error message appears under Windows NT for certain network configurations.

```
Authentication failed
```

To correct this problem, set OS_AUTH=12 in your system environment variables. Select the control panel followed by your system icon to set the system variables.

DLL Not Found

The following error message appears when ObjectStore cannot find needed DLL files:

O4CLIEN1.DLL not found

To correct this problem, verify that the path statement is set correctly. The number of characters on the path must be less than 127, and the path must include %OS_ROOTDIR%/bin.

In Windows 95, this path can be verified by typing the following in the MS-DOS PROMPT:

path

In Windows NT, the path can be verified in Systems Environment located in the Control Panel.

Insufficient Memory

The following error message appears when the available conventional memory is less than 500 KB (the DOS command “mem” displays how much conventional memory is available). Designer will not run without 500 KB of available conventional memory.

Insufficient memory

To correct this problem, disable the Cache Manager. If you disable the Cache Manager, you cannot run more than one ObjectStore client application (Designer, APSW) at a time. To disable the Cache Manager, set the following variables:


```
Set OS_NETWORK = O3NETNSM.DLL
Set OS_DISABLE_CACHE_MANAGER = 1
```

Miscellaneous ObjectStore Error

The following are possible miscellaneous ObjectStore errors:

Environment Variable Must Be Set

The following error message appears when the environment variable OS_LOCAL_HOST is not set or is set incorrectly in the autoexec.bat file:

```
Miscellaneous ObjectStore error. Either [Network] Computername in System.ini or the OS_LOCAL_HOST environment variable must be set [err-misc].
```

To correct this problem set the environment variable to either the name of the PC on the network or LOCAL_HOST (see “Setting Environment Variables” on page 13).

File OS32S.INI Could Not Be Found

The following error message appears when the os32s.ini file is missing or corrupted:

```
Miscellaneous ObjectStore error
The file c:\WIN3.1\OS32S.INI could not be found
[err_misc]
```

To correct this problem, install the os32s.ini file into the correct directory by reinstalling the Designer Series software.

ObjectStore Will Not Start

If Designer software will not start, check for the following conditions:

Windows 95

If ObjectStore fails to start, there can be several causes. Look at the `osserver.txt` file inside your temporary directory, specified by the `ODI_SERVER_DIR` environment variable, for any relevant error messages. The following are some of the reasons the ObjectStore server would fail to start:

1. Not enough conventional memory. You need at least 500 KB of conventional memory to run the ObjectStore server.
2. The “Designer Init” program has not been run. If the “Designer Init” program exists in your Designer Series 3.1 program group or your Startup program group. To correct this problem, start the program group, then execute this program and restart the Designer software.
3. The ObjectStore transaction log file has been deleted. To correct this problem, re-create this file by running “actinit,” located in the “%ALSDIR%\bin” directory.

Windows NT

If ObjectStore fails to start, enter the following command at the DOS prompt:

```
osserver -con -i
```

The following message will then appear on the screen:

You have asked for initialization which will create a new transaction log, deleting any old log that may exist, thus destroying any recovery data in the old log. This may leave some file databases in the broken state. Are you sure that you want to create a new log? (yes/no):

Type “yes.” Then, in the Control Panel, click on the Services icon, and start the ObjectStore Server.

ObjectStore Panic

The following error message appears if the ObjectStore server is not initialized (the server is initialized during the installation process):

ObjectStore Panic

To correct this problem, select the “Designer Init” icon from the Designer Series program group. If you cannot initialize the ObjectStore server because the ObjectStore Panic error persists, check the available conventional memory. You must have a minimum of 500 KB of free conventional memory.

ODI_SERVER_DIR 'F:\TEMP' Does Not Exist

ObjectStore does not support network drives. The following error message appears when 'F' is a network drive:

ERROR: ODI_SERVER_DIR'F:\TEMP' does not exist.

To correct this problem, set the environment variable ODI_SERVER_DIR to a local drive. Under Windows 95, set ODI_SERVER_DIR to a local drive in the autoexec.bat file. Under Windows NT, set ODI_SERVER_DIR in the system setup.

Ostore Cache Manager does not initialize

If Ostore Cache Manager does not initialize, make sure that you have enough conventional memory (see “Insufficient memory” on page 16).

Check the “%ODI_SERVER_DIR%/oscmgr3.txt” file for messages about network sockets failure. If these messages are present, set the os_network variable to o3netnsm as follows:

OS_NETWORK=o3netnsm

Program Performed an Illegal Operation

The following error message appears when there is a computer memory problem:

```
Osserver
This program performed an illegal operation and will be
shut down.
If the problem persists, contact the program vendor.
```

To correct this problem, start the Designer software. If the error message appears again, reboot the computer and restart the Designer Series software.

Server Not Responding

The following error appears when the environment variable OS_ROOTDIR is not set or set incorrectly in the autoexec.bat file.

```
Server not responding. Please restart it.
The specified network host name could not be resolved to
an address. No address for host actel-oss-host on any con-
nected network;
the following errors were noted at init time:
C:\actel\bin\osnettcp.dll:The TCP host name differs from
this computer's host name. ObjectsStore will be unable to
use OSNETTCP until this is corrected.
C:\actel\bin\O3NETBIO.DLL:NETBIOS not loaded.
[err_network]
[err_no_such_host].
```

To correct this problem, make sure that the environmental variable OS_ROOTDIR is set in the autoexec.bat file. The variable should read OS_ROOTDIR=C:\ACTEL (assuming \ACTEL is the installation directory). See “Setting Environment Variables” on page 13.

Removing ObjectStore

This chapter describes how to permanently remove ObjectStore software from your computer once all Designer version 3.1 and 3.0 designs have been converted to be compatible with the current version of Designer.

Removing ObjectStore

Perform the following steps to remove ObjectStore:

1. **Click the Start button, click Programs, click ObjectStore Win32, and double click on the ObjectStore Setup icon.**
2. **Click Uninstall in the ObjectStore Setup window.**
3. **Make desired selections in ObjectStore Uninstall Actions dialog box, and click OK.**
4. **Delete the OSTORE directory from your hard drive.**

Product Support

Actel backs its products with various support services including Customer Service, a Customer Applications Center, a fax back service, a Web and FTP site, electronic mail, and worldwide sales offices. This appendix contains information about using these services and contacting Actel for service and support.

Actel U.S. Toll-Free Line

Use the Actel toll-free line to contact Actel for sales information, technical support, requests for literature about Actel and Actel products, Customer Service, investor information, and using the Action Facts service.

The Actel Toll-Free Line is (888) 99-ACTEL.

Customer Service

Contact Customer Service for non-technical product support, such as product pricing, product upgrades, update information, order status, and authorization.

From Northeast and North Central U.S.A., call (408) 522-4480.

From Southeast and Southwest U.S.A., call (408) 522-4480.

From South Central U.S.A., call (408) 522-4474.

From Northwest U.S.A., call (408) 522-4434.

From Canada, call (408) 522-4480.

From Europe, call (408) 522-4474 or +44 (0) 1256 305600.

From Japan, call (408) 522-4252.

From the rest of the world, call (408) 522-4252.

Fax, from anywhere in the world (408) 522-8044.

Customer Applications Center

The Customer Applications Center is staffed by applications engineers who can answer your hardware, software, and design questions.

All calls are answered by our Technical Message Center. The center retrieves information, such as your name, company name, phone number and your question, and then issues a case number. The Center then forwards the information to a queue where the first available application engineer receives the data and returns your call. The phone hours are from 7:30 a.m. to 5 p.m., Pacific Standard Time, Monday through Friday.

The Customer Applications Center number is (800) 262-1060.

European customers can call +44 (0) 1256 305600.

Guru Automated Technical Support

Guru is a Web based automated technical support system accessible through the Actel home page (<http://www.actel.com>). Guru provides answers to technical questions about Actel products. Many answers include diagrams, illustrations and links to other resources on the Actel Web site. Guru is available 24 hours a day, seven days a week.

Action Facts

Action Facts is a 24-hour fax-back service that allows you to have technical literature faxed directly to you. The literature includes current applications notes, device diagrams, radiation testing reports, CAE-related documents, training release schedules, and much more.

To receive your free copy of the catalog or any of our literature, contact us at (800) 262-1062 or (408) 739-1588.

Web Site

Actel has a World Wide Web home page where you can browse a variety of technical and non-technical information. Use a Net browser (Netscape recommended) to access Actel's home page.

The URL is <http://www.actel.com>. You are welcome to share the resources we have provided on the net.

Be sure to visit the "Actel User Area" on our Web site, which contains information regarding: products, technical services, current manuals, and release notes.

FTP Site

Actel has an anonymous FTP site located at <ftp://ftp.actel.com>. You can directly obtain library updates, software patches, design files, and data sheets.

Electronic Mail

You can communicate your technical questions to our e-mail address and receive answers back by e-mail, fax, or phone. Also, if you have design problems, you can e-mail your design files to receive assistance. The e-mail account is monitored several times per day.

The technical support e-mail address is tech@actel.com.

Worldwide Sales Offices

Actel Corporation
955 East Arques Avenue
Sunnyvale, California 94086
USA
Toll Free: 888.99.ACTEL
Tel: 408.739.1010
Fax: 408.739.1540

California (North)
Tel: 408.328.2200
Fax: 408.328.2358

California (South)
Tel: 714.727.0470
Fax: 714.727.0476

Georgia
Tel: 770.844.4495
Fax: 770.844.1395

Illinois
Tel: 847.259.1501
Fax: 847.259.1572

Massachusetts
Tel: 508.635.0010
Fax: 508.635.9510

Texas
Tel: 972.235.8944
Fax: 972.235.9659

Actel Europe, Ltd.
Daneshill House, Lutyens Close
Basingstoke,
Hampshire RG24 8AG
United Kingdom
Tel: +44 (0)1256.305600
Fax: +44 (0)1256.355420

England
Tel: +44 (0)1256.305600
Fax: +44 (0)1256.355420

France
Tel: +33 (0)1.40.83.11.00
Fax: +33 (0)1.40.94.11.04

Germany
Tel: +49 (0)8165.9584.0
Fax: +49 (0)8165.9584.10

Italy
Tel: +39 (0)2.38.09.32.59
Fax: +39 (0)2.38.09.32.60

Actel Asia-Pacific
EXOS Ebisu Building 4F
1-24-14 Ebisu Shibuya-ku
Tokyo 150 Japan
Tel: +81 (0)3.3445.7671
Fax: +81 (0)3.3445.7668

Japan
Tel: +81 (0)3.3445.7671
Fax: +81 (0)3.3445.7668

Korea
Tel: +82 (0)2.555.7425
Fax: +82 (0)2.555.5779

Index

A

Actel
 FTP Site 25
 Web Based Technical Support 24
 Web Site 25
Action Facts 24

C

Contacting Actel
 Customer Service 23
 Electronic Mail 25
 Technical Support 24
 Toll-Free 23
 Web Based Technical Support 24
Converting
 3.0 and 3.1 Designs 7
 Pre-3.0 Designs 7
Converting Databases 7
Customer Service 23

E

Electronic Mail 25
Environment Variables Checklist 13
Environmental Variables
 ODI_SERVER_DIR 13
 OS_LOCAL_HOST 13

I

Installing ObjectStore 9
Introduction v

O

ObjectStore, Installing 9
ObjectStore, Removing 21

P

Product Support 23–26
 Action Facts 24
 Customer Applications Center 24
 Customer Service 23
 Electronic Mail 25
 FTP Site 25
 Technical Support 24
 Toll-Free Line 23
 Web Site 25

R

Removing ObjectStore 21

T

Technical Support 24
Toll-Free Line 23
Troubleshooting 15

W

Web Based Technical Support 24